

d<sup>1</sup>

design.

d<sup>2</sup>

develop.

d<sup>3</sup>

deploy.

## Embedded Planet EP8122A



Representative Photo

### Features:

- **Processor:** 8 Freescale MSC8122 StarCore DSPs capable of handling over 2000 channels of voice data
- **RAM:** Each StarCore has 32MB of 64-bit wide SDRAM
- **Flash:** The Master DSP has 4MB of flash for bootstrapping
- **Ethernet:** Single Gigabit Ethernet to AMC channel 0 with Layer 2 switch connecting 10/100 ports to each of the MSC8122s
- **Power Supply:** 12V via AMC connector
- **Form Factor:** Single width, full height AMC
- **Debug:** On board JTAG allows debugging of all DSPs

### Advanced Mezzanine Card (AMC)

The EP8122A is an Advanced Mezzanine Card (AMC) designed as a modular and scalable evaluation platform for Multi-service Media Gateway and Remote Access Concentrator systems. It is an ideal development system for OEMs to evaluate, develop and test telephony software, offering a significant time-to-market advantage.

The EP8122A utilizes eight MSC8122 devices in a DSP array. A Layer 2 Ethernet switch terminates the packet protocol and transfers media data to and from the DSP array through its RMI or DSI busses. It routes a single Gigabit Ethernet port to the AMC channel 0 (AMC.2 type E1). In addition it has an optional TDM mapping to the Extended Options region of the AMC connector.

Each MSC8122 Core has a 10/100 Ethernet connection to the Layer 2 Ethernet switch, a standard CT-Bus TDM connector and 32MB of SDRAM. A master DSP includes 4MB of flash for boot strapping the whole card. The MSC8122s are interconnected via an FPGA and DSI interface for low latency access to each core.

**design.**

The next generation of connected devices.

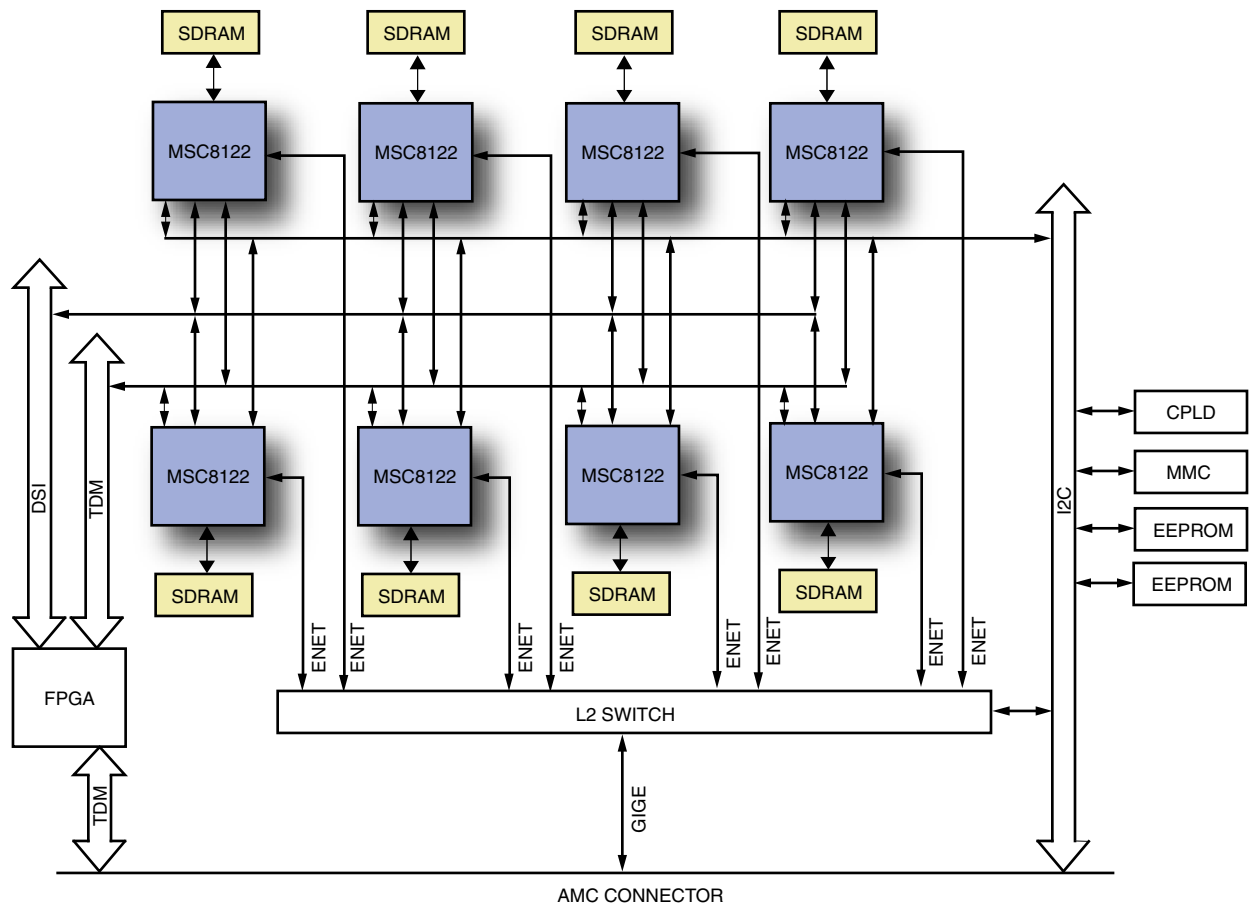
**develop.**

Your products based on our platform.

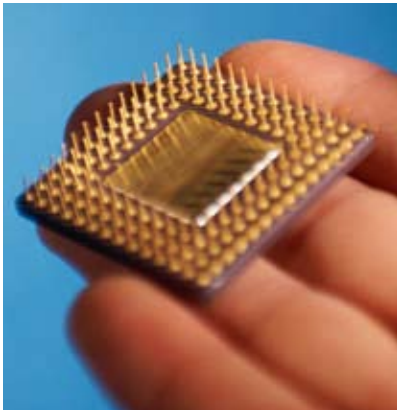
**deploy.**

Your solution faster.

## Block Diagram



## Let Us Do The Heavy Lifting



- Embedded Planet offers a complete set of software and hardware training and customization services to go along with our Off-the-Shelf solutions.
- Our training classes in Linux, VxWorks, and Eclipse can help your engineering team shrink their time-to-productivity and help ensure higher quality products.
- Our custom diagnostics tools, Eclipse applications, U-Boot porting, Linux, Green Hills INTEGRITY, and VxWorks BSPs and applications can extend your engineering team and shrink your time to market.
- Contact Embedded Planet to find out how our Professional Services Division can accelerate your project.

This material is the copyright of Embedded Planet 1997-2006. Embedded Planet is a registered Trademark. Other company and product names may be trademarks of their respective owners. Product specifications subject to change without notice.

Contact Embedded Planet sales:  
[www.embeddedplanet.com](http://www.embeddedplanet.com) or  
 email [info@embeddedplanet.com](mailto:info@embeddedplanet.com)  
 phone (216) 245-4180