



The EP 8280 computing engine takes advantage of the high performance networking capabilities of the Motorola Power PC 8280, Power PC 8270, Power PC 8266, Power PC 8265 or Power PC 8250 processor.

By integrating all of the features of the PowerQUICC II technology onto one single board, the computing engines reduce Time-To-Market and increase product reliability for complex high-speed networking applications.

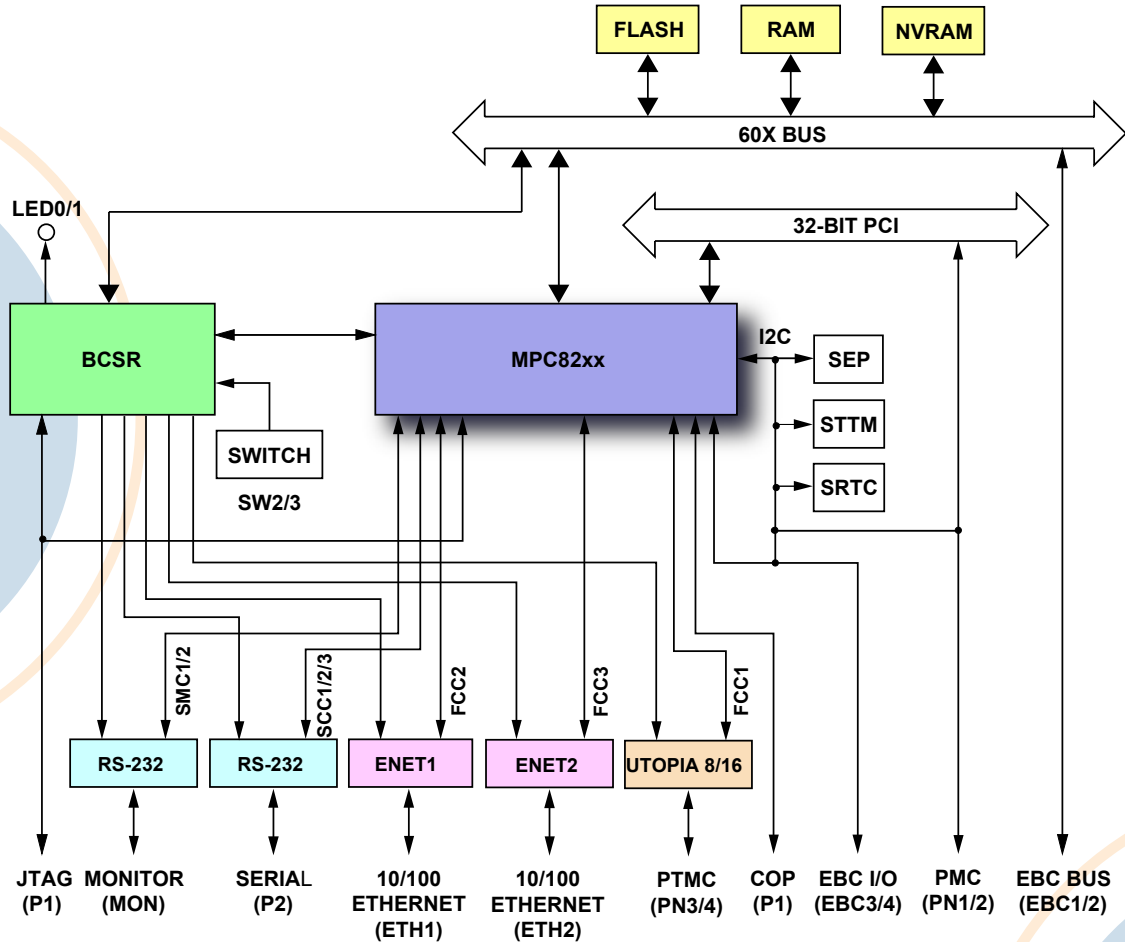
### Feature Summary:

Specification:	Description:
Form Factor:	PrPMC/PT1MC (PICMG 2.15, Configuration 1)
PMC Connectors:	PCI bus through PrPMC Connectors
Front Panel:	Two 10/100 BaseT Ethernet RS-232 serial monitor port
Processor:	Freescale PowerQUICC II PowerPC Family including the 8280, 8270, 8266, 8265, and 8250
Memory:	RAM: Up to 256MB SDRAM FLASH: Up to 64MB
Debug:	JTAG/COP via an onboard connector
Power Supply:	5.25 to 3 VDC single supply
Software:	Linux and VxWorks BSPs are available from Embedded Planet

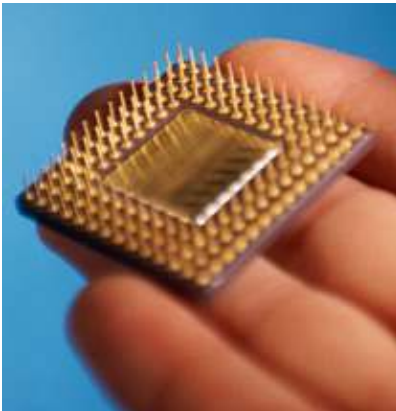
Scaleable in size and flexible in configuration, they provide a production-ready platform for tomorrow's networks.

It is a highly versatile board that can operate as stand alone module or in PrPMC monarch and non-monarch modes on a carrier board such as a Compact PCI blade.

### Hardware Block Diagram



## Let Us Do The Heavy Lifting



- Embedded Planet offers a complete set of software and hardware services to go along with our Off-the-Shelf solutions.
- Embedded Planet has extensive experience with embedded operating systems and firmware. Our stock configurations of operating systems and firmware can be customized to meet your particular needs.
- We can alleviate the headaches associated with volume production of embedded systems. Your product is delivered 100% tested from an ISO-9002 certified manufacturing facility.
- Our capabilities are available on a project basis to design custom solutions specifically tailored to your application.
- Contact Embedded Planet to find out how we can accelerate your project.