



The RPX Lite computing engine takes advantage of the networking capabilities of the Motorola PowerPC MPC823e or MPC850 processors.

By integrating all of the features of the PowerQUICC technology onto one single board, the computing engines reduce Time-To-Market and increase product reliability.

Scaleable in size and flexible in configuration, they provide a production-ready platform for tomorrow's networks. The board is PC/104 mechanical sized.

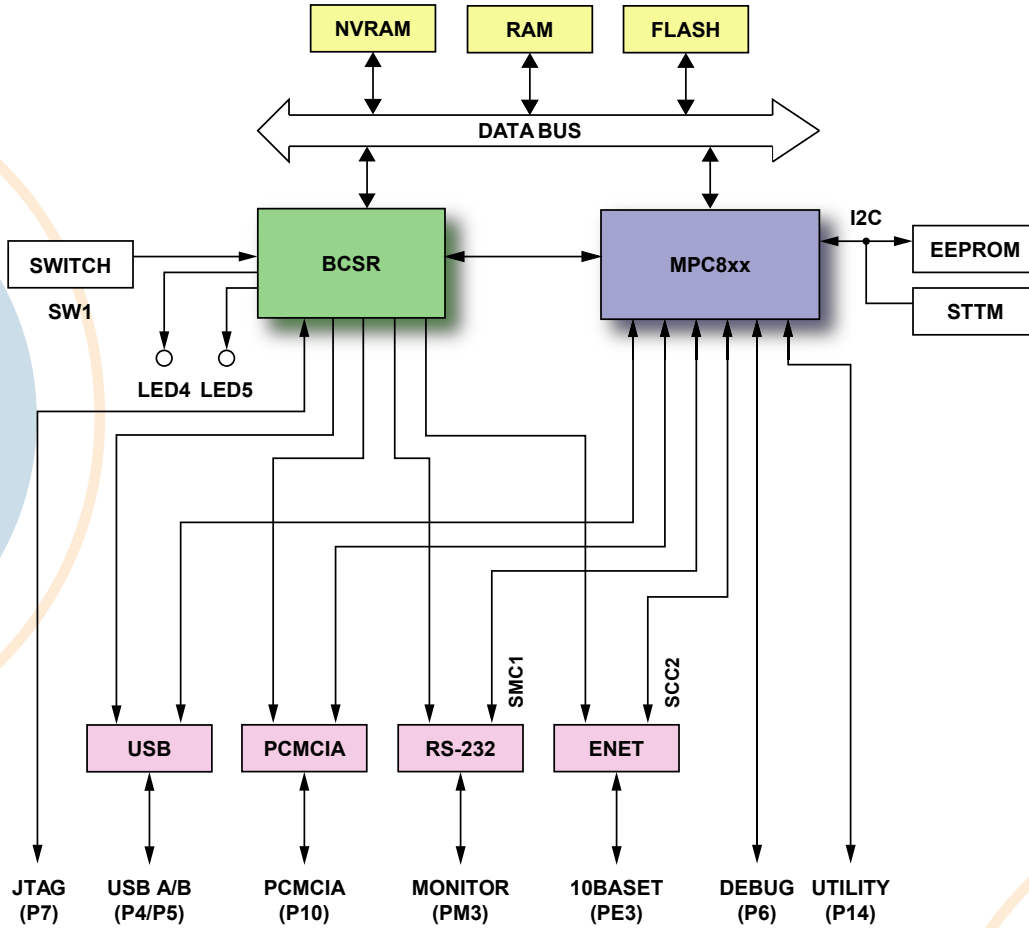
Available in a Board Development Kit.

Feature Summary:

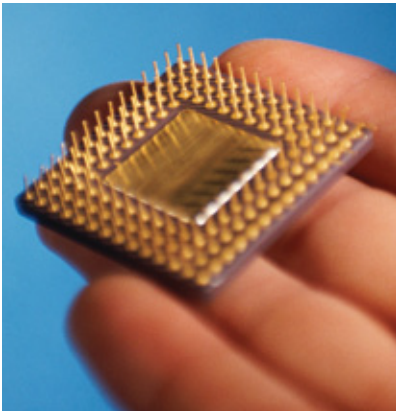
Specification:	Description:
Processor:	Freescale PowerQUICC I MPC823E or MPC850 PowerPC
Memory:	RAM: Up to 64MB SDRAM FLASH: Up to 16MB NVRAM: Up to 512kB with RTC
Ethernet:	1 x 10BT
Serial Ports:	1 x RS-232
Expansion:	PCMCIA Single Type I, II, or III slot, RPX Bus for direct access to processor signals
I2C Devices:	EEPROM, Temperature Sensor
Debug:	On-board JTAG connection for simplicity in software debug
Power Supply:	5.25 to 3 VDC single supply
Form Factor:	3.775" x 3.55"



Hardware Block Diagram



Let Us Do The Heavy Lifting



- Embedded Planet offers a complete set of software and hardware services to go along with our Off-the-Shelf solutions.
- Embedded Planet has extensive experience with embedded operating systems and firmware. Our stock configurations of operating systems and firmware can be customized to meet your particular needs.
- We can alleviate the headaches associated with volume production of embedded systems. Your product is delivered 100% tested from an ISO-9002 certified manufacturing facility.
- Our capabilities are available on a project basis to design custom solutions specifically tailored to your application.
- Contact Embedded Planet to find out how we can accelerate your project.